



The Xylanta SAINT3 family are the latest generation of products derived from the highly successful SAINT serial communications analysis tools originally developed by Delphi/Aptiv. These new products enhance the SAINT2 design, whilst maintaining a high level of software and hardware compatibility with the older product.

The uSAINT3-T1 is a flexible, cost-effective 100Base-T1 Ethernet monitoring and logging tool designed with the needs of software developers and system testers in mind. USB based and highly portable, it suits a wide range of situations. The communications interfaces can act as silent, packet monitors or have the ability to actively inject packets into the data streams.

It is supported by the included SAINT Bus Engine (SBE) and Bus Monitor. In addition an API is available allowing custom SBE plugins to be developed.

Key Features

Flexible Communications Tool

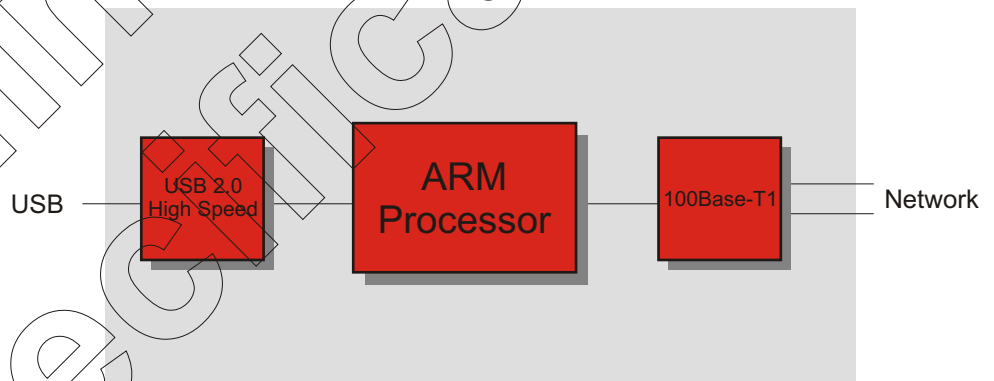
- Supports a single 100Base-T1 link
- All interfaces support non-intrusive monitor only mode
- Installs with both SAINT and RNDIS USB interfaces
- USB 2.0 High Speed, Bus Powered Device

100Base-T1 Bus Features

- Configurable MAC address
- Software selectable master/slave mode
- Supports selective filtering of received packets
- Detects and reports a wide range of message/bus errors

Application Software

- Integrates with the SAINT Bus Engine (SBE)
- SBE provides an open API for software plugins
- Includes Bus Monitor plugin
- Software supports Windows 7, 10 and 11



Applications

- Network diagnostics
- Logging via the Saint Bus Engine (SBE)
- Software download and firmware updates
- Gateway between buses
- Automation of message testing
- And many others...

Product Specification

General Features

- Onboard 32-bit ARM processor
- High Speed USB 2.0 interface (480Mbps)
- 16-bit timestamp giving 1millisecond resolution
- Field upgradeable firmware design (flash firmware)
- Powered via USB for ease of use

100Base-T1 Support

- High performance Ethernet MAC with dedicated DMA controller
- NXP TJA1100 100Base-T1 single wire PHY
- Molex Mini50 connector for physical layer
- Configurable MAC address
- Software selectable master/slave mode
- Supports selective filtering of received packets
- Detects and reports a wide range of message/bus errors

Other

- Ships with USB cable
- Operating temperature -10C to +80C, 85% RH (non condensing)
- Compact, robust metal case (80mm x 45mm x 25mm)
- Weight 125g
- FCC and CE compliant
- One year limited warranty

Host Software Support

General Features

- Fully compatible with existing SAINT2 applications

CAN SAINT Bus Engine (SBE)

- Allow detection of all SAINT compatible devices
- Provides an interface for selection and connection

Bus Monitor Plugin

- Provides a scrolling message monitor
- Enhanced to support Ethernet packets
- Supports message filtering, scripting, emulation and logging

J2534

- Enhanced J2534 interface with Ethernet support (in development)

SDK

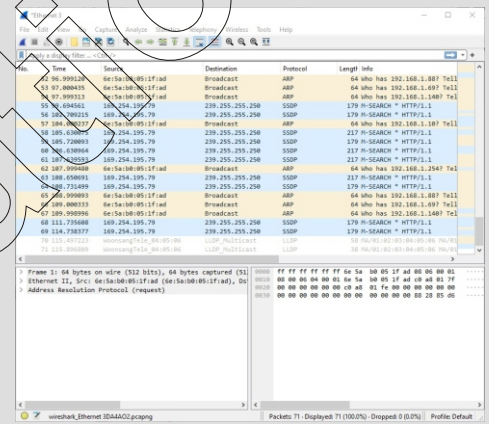
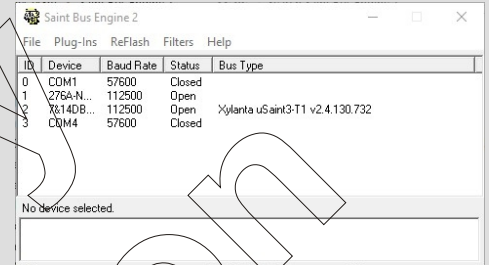
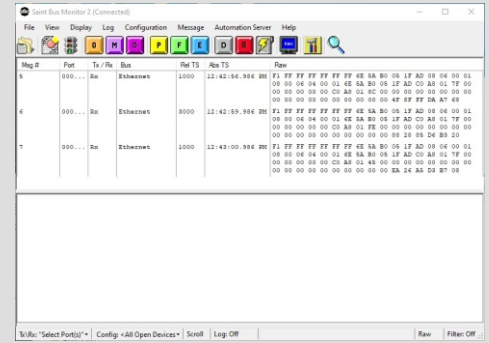
- Allows development of SBE plugins

Other

- Requires Windows 7, 10 or 11

Order Codes

- S3UT-001 uSAINT3-T1 with 1m USB cable
- S3UT-002 uSAINT3-T1 without accessories



For more information email: sales@xylanta.com

The information contained herein is believed accurate at the time of writing and is subject to change without notice. Copyright © 2024 Xylanta Ltd. All rights reserved. Xylanta and DeskLab are trademarks of Xylanta Ltd. Rev.2 March 2024.

Xylanta
Advanced Test Solutions

www.xylanta.com